



# ALEX PetroServe



## PTC-3D Water Jet Pump



## PTC-3D water jet pump

The PTC-3D Jet Pump is a compact and efficient solution, utilizing three-dimensional technology to excel in low-pressure applications. With its robust design and energy-saving features, this innovative pump is ideal for various industries, delivering reliable fluid transfer, circulation, and mixing capabilities. Its performance sets new standards for efficiency, making it a top choice for fluid handling tasks while minimizing operational costs.



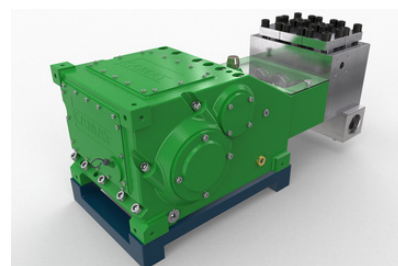
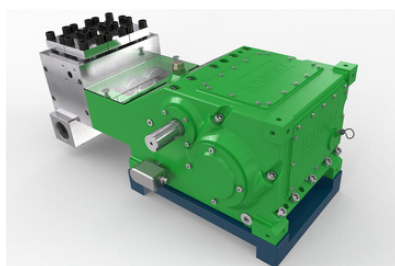
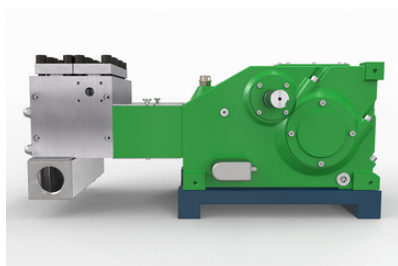
**PTC-3D**



MACHINE	
Type	PTC-3/k90-D
Pressure [bar]	665
Power supply	Diesel
Fuel Tank [l]	100
Flow [l/min]	63
Power [kw]	90



PUMP	
Brand	KAMAT
Type	K9026
HP Pressure gauge	1600 bar
Crankshaft speed	530 rpm
Max water inlet temp	30°C



ENGINE	
Brand	IVICO
Type	FPT N45ENTHW21.5
rpm calibration	2000
Cylinders	4
Displacement	4.5 l
Power [kw@rpm]	103@2200



## MACHINE OPTIONS AND CONFIGURATIONS

Control panel	<ul style="list-style-type: none"> <li>• Engine control board</li> <li>• Main switch</li> <li>• Start button</li> <li>• On/Off pressure buttons</li> <li>• Motor lamp</li> <li>• Manul pressure regulation</li> <li>• Emergency stop</li> <li>• Pressure transducer</li> <li>• Alarm/lamp low-pressure inlet water</li> <li>• Alarm/lamp low-pressure pump oil</li> <li>• Alarm/lamp high-temperature pump oil</li> <li>• Alarm/lamp low-pressure compressor air</li> </ul>
Options	<ul style="list-style-type: none"> <li>• Booster pump</li> <li>• Water tank</li> <li>• Tool kit for plunger pump</li> <li>• HP Pressure Dumper</li> <li>• LP Pressure Dumper</li> </ul>
Filters	<ul style="list-style-type: none"> <li>• oil filter</li> <li>• water filter</li> <li>• fuel filter</li> <li>• air filter</li> </ul>
Frame	Trolley mount



# WORLD OF POSSIBLE APPLICATIONS

- **CLEANING HEAT EXCHANGER**

Our experienced team ensures the optimal performance of your heat exchangers through thorough cleaning, removing deposits and contaminants. We also offer regular maintenance to prevent efficiency losses, prolong equipment lifespan, and minimize potential disruptions. Trust us to keep your heat exchangers operating at their best, maximizing heat transfer efficiency and reducing energy consumption.



- **PETROCHEMICAL PROCESSING AND REFINERIES**

Algae, carbon, scum, soft polymers and asbestos, wax, paraffin, grease and crude residues, water scale, calcium sulphate, chlorides, hard polymers, iron oxide, coke, hard carbon, PVC and PVA in heat exchangers, re-boilers, tanks, reactors, pipes, cooling towers and facilities; “cold” cutting.

- **TUBES AND PIPELINES CLEANING**

Removal of rust and varnish prior to recoating, dope, and oil from pipe threads for inspection, drilling mud and debris in various kinds of pipes (internal); manual or fully automatic test units equipped with plunger pumps for filling and test processes.

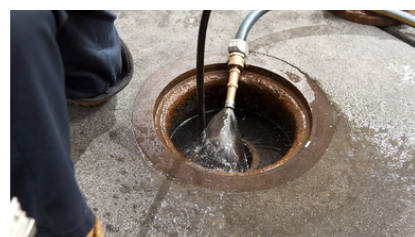


- **OILFIELDS**

Paraffin and crude residues from platforms and storage tanks; removal of drilling mud and cement from drill pipes; “cold” cutting.

- **GENERAL CLEANING**

Reservoirs and containers, sewers and drain pipes, sanitation equipment and refuse vehicles; insulators, boiler tubes, vehicles and machinery; surface preparation.



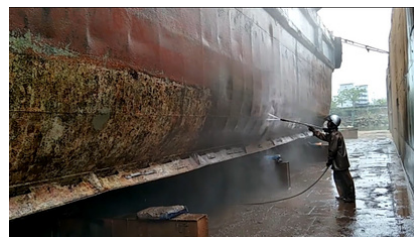




# WORLD OF POSSIBLE APPLICATIONS

- **MARINE**

Removal of marine growth, barnacles, loose paint, and rust on ship hulls, docks, ballasts, platforms, condensers, floating drydocks, anchor chains, storage tanks, and boilers; underwater cleaning of pipes and drilling platforms, of barnacles and marine growth to 'white metal'; coatings removal prior to repainting; draining of sludge and sediments from cargo holds, ballast tanks and double bottoms; surface preparation.



- **HYDRODEMOLITION**

Concrete cement cutting, reclamation and wet sandblasting of tunnels also using special robots; concrete surface hydro-ripping for large infrastructure, dams, viaducts, homes and offices; surface preparation.

- **SURFACE CLEANING AND PREPERATION**

Removal of deposits, metal oxidation, ceramic, and sand core materials from castings, furnaces, and paddles.



- **PHARMACEUTICAL**

Cleaning of chemicals (liquid and solid) from pipes, kettles, mixers, tubes, heat exchangers, reactors, filters, and evaporators.

- **MINING**

Pre-maintenance cleaning of dumpers, drag lines, underground haulage lines, and shafts; aids in the recovery of ore; unclog plant machinery due to deposits of coal, rock dust, mud, or oils.





# Features

**1. Pressure and Flow Control:** The PTC-3 HP650/D system features advanced pressure and flow control capabilities, allowing operators to precisely adjust and control the water pressure and flow rate to meet the requirements of a wide range of cleaning and cutting applications.

**2. Multi-Nozzle Configuration:** The system is equipped with multiple nozzle configurations, including straight, and rotary, to provide maximum flexibility and performance in a variety of cleaning and cutting scenarios.

**3. High Efficiency:** The system is designed for maximum efficiency, with a high-powered diesel engine that provides ample power for the water pump, allowing for longer operating times and faster cleaning speeds.

**4. Enhanced Safety Features:** The system is equipped with a range of safety features, including emergency stop switches, safety valves, and pressure relief devices, to ensure safe and reliable operation at all times.

**5. Versatile Applications:** The system can be used for a variety of industrial cleaning and cutting applications, including surface preparation, rust removal, paint stripping, and more.





# ALEX PetroServe



 [info@AlexPetroServe.com](mailto:info@AlexPetroServe.com)


 [@AlexPetroServe](https://www.youtube.com/@AlexPetroServe)

 01060608072

 01060608072

 [AlexPetroServe](https://www.facebook.com/AlexPetroServe)

 [AlexPetroServe](https://www.linkedin.com/company/AlexPetroServe)

 22 El-Mahmoudia Road Somuha, Alexandria Egypt

[WWW.AlexPetroServe.com](http://WWW.AlexPetroServe.com)